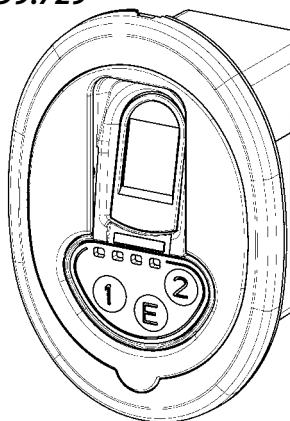


FINGERPRINT READER

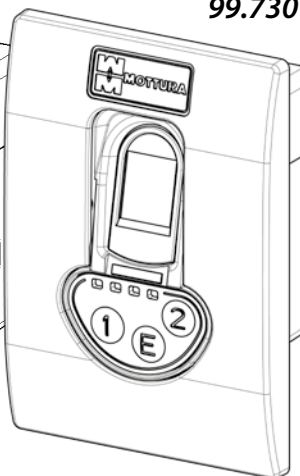
99.729 / 99.730 / 99.748



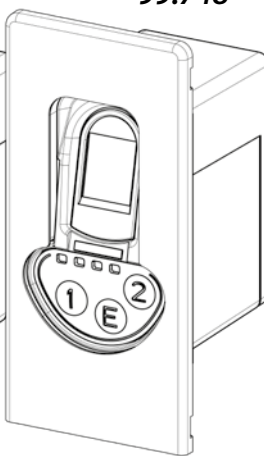
99.729



99.730



99.748



5 protection against dust
and wire contact with
dangerous parts.
4 protection against
splashing water.



GENERAL WARNINGS

Mottura Serrature di Sicurezza S.p.A. thanks you for choosing this product and reminds you:

- to read these instructions very carefully before installing and using this product and before doing any maintenance.
- to keep these instructions for future use and attach the sales receipt to validate the warranty.
- in case of problems, contact your authorized dealer only.

“DO NOT use a liquid, spray, or wet cloth to clean the escutcheon! If liquids enter the scanner, they will oxidize and permanently damage its components. Use a dry cloth only. DO NOT paint the escutcheon with any method or substance. Failure to follow these instructions will immediately void the warranty!”

Mottura Serrature di Sicurezza S.p.A. may change the characteristics of the products described in these instructions at any time and without notice. **Always disconnect power supply before carrying out any connection/assembly operation and/or subsequent procedure.**

WARRANTY TERMS

This device has been inspected by Mottura Serrature di Sicurezza S.p.A. and is guaranteed against all manufacturing defects for the period defined by Italian law; the period begins on the date of purchase as demonstrated by the sales receipt. The warranty is effective if the sales receipt, bearing information identifying the device, is shown to the dealer or service personnel. The warranty covers the replacement or repair of parts found defective due to faulty manufacture; shipping costs to and from service centers are charged to the customer.

In case of a repeated malfunction of the same origin or a malfunction that cannot be repaired, Mottura Serrature di Sicurezza S.p.A. may decide, in its final judgment, to replace the entire device. The warranty on the replacement device will continue to the expiration of the original device. If the device must be serviced at the customer's home, the customer is required to pay (if requested) a minimum charge to cover the transfer costs of authorized service personnel.

Transport is at the customer's risk if the customer ships the device, and at the service personnel's risk if the device is picked up and transported by service personnel.

LIMITS OF LIABILITY

The warranty does not cover damage deriving from:

- negligence, carelessness, or use other than as described below
- failure to protect the device before doing any procedure that may generate scrap or waste (welding, drilling of panels, drilling of structure, etc.) that prevents its correct functioning
- maintenance work not conforming to these instructions or done by unauthorized personnel
- use of accessories/components that are not original Mottura products
- shipping of the device without the necessary precautions
- any circumstances not attributable to manufacturing defects.

Operating temperature: -20°C to +70 °C.

In addition, Mottura Serrature di Sicurezza S.p.A. declines all liability for any harm to persons or damage to property deriving from failure to comply with all of the instructions and warnings contained in this manual.




CONTENTS

INSTALLER

1 -	ESCUTCHEON	pag. 3
2 -	ASSEMBLY AND ELECTRICAL CONNECTION...	
	... WITH XMODE	4
	... WITH XNOVA OR OTHER ELECTRONIC/ELECTRICAL LOCKS	4
3 -	AUTHENTICATION WITH XMODE	5
4 -	AUTHENTICATION WITH XNOVA OR OTHER ELECTRONIC/ELECTRICAL LOCKS	6

USER

5 -	MANAGING TAGS WITH XMODE	7
6 -	MANAGING TAGS WITH OTHER ELECTRONIC/ELECTRICAL LOCKS /XNOVA	
6.1	MEMORIZING MASTER TAGS	7
6.2	MEMORIZING SERVICE TAGS	8
6.3	DISABLING SERVICE TAGS	9
6.4	ENABLING SERVICE TAGS	10
6.5	DELETING SINGLE TAGS	11
6.6	DELETING ALL TAGS	12
7 -	MEMORIZING FINGERPRINTS (XMODE / ELECTRONIC / ELECTRICAL LOCKS / XNOVA)	13
8 -	DELETING FINGERPRINTS (XMODE / ELECTRONIC / ELECTRICAL LOCKS / XNOVA)	14
9 -	USING THE FINGERPRINT (XMODE/ELECTRONIC/ELECTRICAL LOCKS/XNOVA)	15

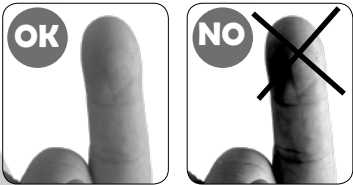
 **CAUTION :** the system is supplied in factory condition, i.e., any MOTTURA TAG can operate the lock and access programming. The first thing the user must do is delete all of the fingerprints and TAGs to prevent any unauthorized access. After this is done, the user **MUST MEMORIZE** the fingerprints and TAGs that will have access to the opening.

NOTICE FOR USING THE FINGERPRINT SCANNER

For optimum use of the fingerprint scanner, **it is strongly advised not to install the product in areas exposed to extreme temperatures, high temperature fluctuations, high humidity levels, or exposed to dust of any kind and consistency. Avoid installing the product in places exposed to direct sunlight.**

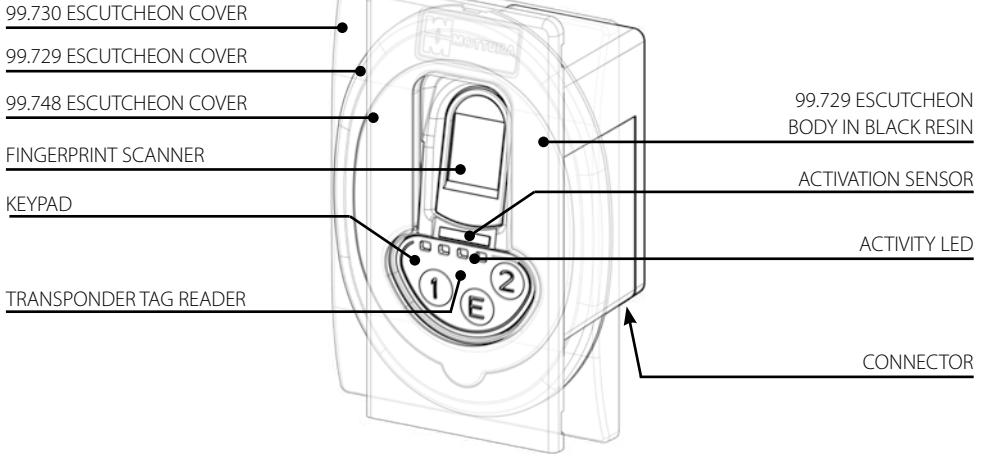
When opening the lock, place your finger the same way it was recorded during memorization. The scanner is programmed to work with a certain degree of security during the scan, and will always recognize only the same portion of skin scanned during memorization. Therefore, a different finger swipe will NOT be memorized.

During memorization and scanning, place your finger slowly with moderate pressure. Keep it flat and never curved. Dirt or grease of any kind on the fingerprints to be recorded will make correct functioning of the scanner very difficult or impossible. Dry or cold skin, or cuts or abrasions on the finger will compromise good scanning. These factors may negatively affect use of the fingerprints even if they were correctly memorized.



The memorization and use of fingerprints is subjective and may vary considerably from person to person, especially in relation to the depth and quality of each person's fingerprints. We recommend to store an additional user TAG in case of reading failure of the fingerprint.

1. ESCUTCHEON



The external FINGERPRINT SCANNER/TRANSPONDER escutcheon has 3 function keys, a transponder reader (RFID), a buzzer, and four LEDs (red-yellow-blue-green).

It lets you open/close the lock in two ways:

- FINGERPRINT: the scanner lets you enter a maximum of 100 fingerprints authorized to operate the lock.
- TRANSPONDER KEY (TAG): the escutcheon checks the presence of a transponder key (TAG – not included) placed near the center of the keypad. The number of stored TAG keys is NOT tied to the escutcheon but to the device to which it is connected :

XMODE protected tag system : 255 TAG

XMODE free tag system : 200 TAG

XNOVA / ELECTRONIC / ELECTRICAL LOCKS : 200 TAG



TAG - CARD
Art. 99691/99705



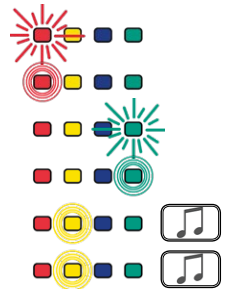
TAG - KEY
Art. 99692/99706

The function keys are:

- numeric buttons 1, 2, E to be used during programming.

The LED show door state on any operation under way :

- | | |
|---|-----------------------------|
| - RED LED flashing | lock closed |
| - RED LED on | lock closing |
| - GREEN LED flashing | lock open |
| - GREEN LED on | lock opening |
| - YELLOW LED on + 3 beeps | signal to replace batteries |
| - YELLOW LED on + double high-low sound | batteries low |



The signal to replace the batteries is given before any operation is carried out (opening/closing, etc.).

You should replace the batteries as soon as possible to ensure correct functioning of the lock.

Buzzers signal when the lock has been opened or closed.

2. ASSEMBLY AND ELECTRICAL CONNECTION

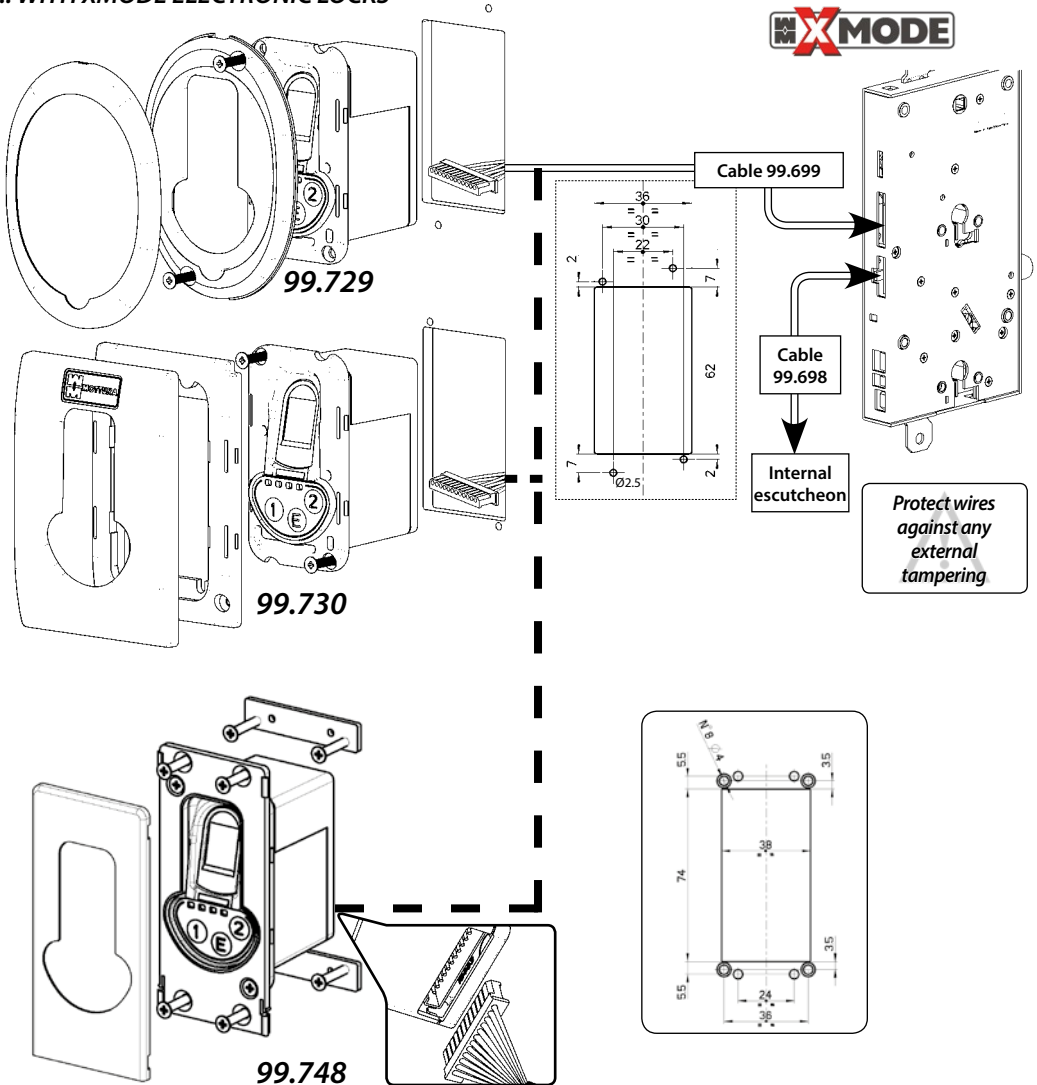


The connections must be made by a qualified technician competent to existing electrical safety standards and to Rules of Good Engineering.

N.B. All connections must be made with the electrical supply switched off and the batteries disconnected.

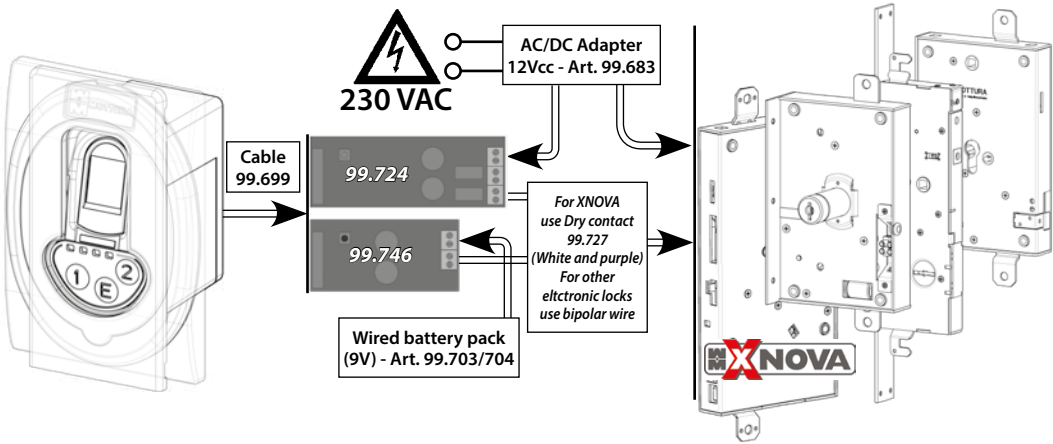
Make a 62 x 36 mm gap in the door panel as shown in the figure, then connect the wire to the lock.

... WITH XMODE ELECTRONIC LOCKS




... WITH OTHER ELECTRONIC / ELECTRICAL / XNOVA LOCKS

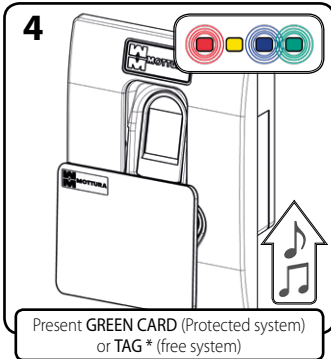
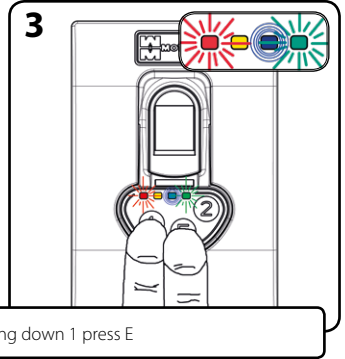
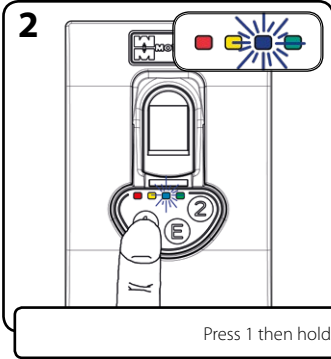
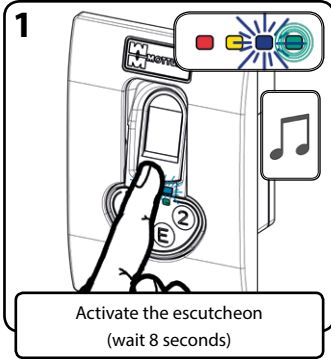
To connect the escutcheon to XNova or other electronic/electrical locks, use an interface card (RELAY MODULE Art. 99.724 with MAIN POWERED - Art. 99.746 with MAIN POWERED and BATTERY) to be purchased separately. See the article's instruction manual.



3. AUTHENTICATION WITH XMODE LOCKS

 The fingerprint reader must ALWAYS be authenticated with the lock in order to function and to guarantee maximum security. This procedure DELETES all previous fingerprints (any test fingerprints that may open the lock without authorization).

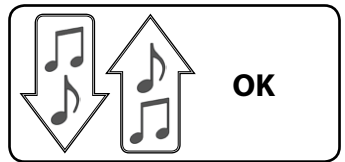
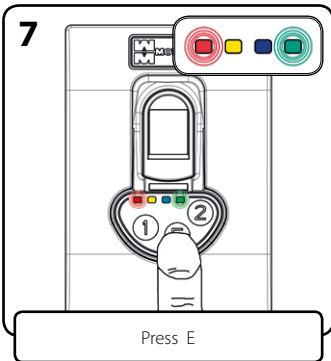
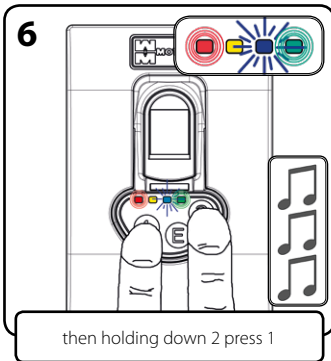
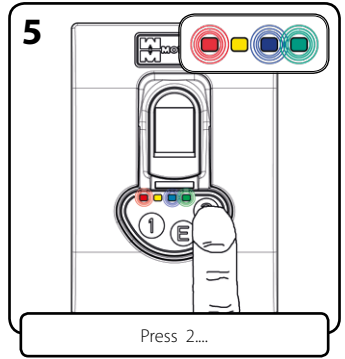
KEEP THE DOOR OPEN AND USE ONLY THE EXTERNAL ESCUTCHEON



** If the lock is new or has been reset,
any free Mottura TAG can be used
to enter programming mode and
open the lock!*


**One or more master TAGS SHOULD
BE MEMORIZED immediately to
guarantee security.**

*See the lock user manual (chapter 5)
for memorization and management
of TAGS.*

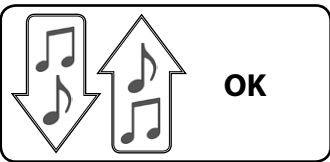
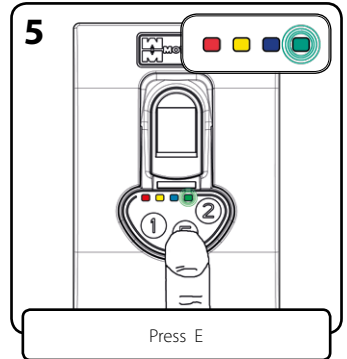
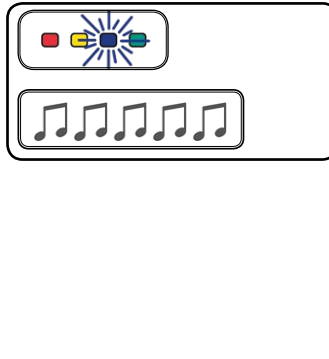
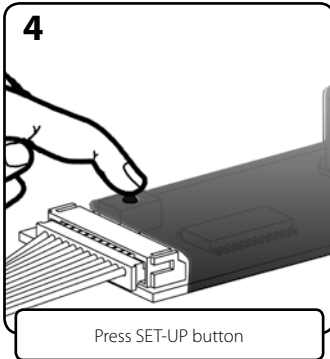
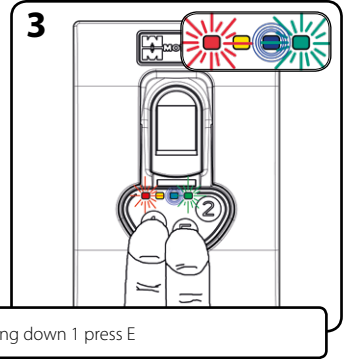
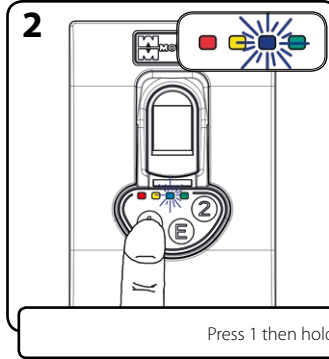
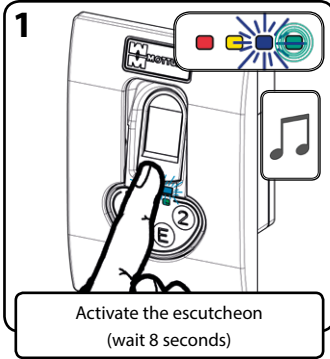


The system automatically exits programming mode.

4. AUTHENTICATION WITH OTHER ELECTRONIC/ELECTRICAL /XNOVA LOCKS

 The fingerprint reader must ALWAYS be authenticated with the RELAY MODULE (Art. 99724 / 99.746) in order to function and to guarantee maximum security. This procedure DELETES all previous fingerprints (any test fingerprints that may open the lock without authorization).

KEEP THE DOOR OPEN



The system automatically exits programming mode.

5. MANAGING TAGS WITH XMODE

ATTENTION : See the lock user manual (chapter 5) for management of TAGS.

6. MANAGING TAGS WITH OTHER ELECTRONIC/ELECTRICAL/XNOVA LOCKS

ATTENTION: if no TAGS are memorized on the control unit (new lock or after a reset), any free Mottura TAG can be used to enter programming mode! **You SHOULD IMMEDIATELY MEMORIZE first your master TAGS, then any service TAGS, to guarantee maximum security.**

After this operation, the control unit will accept only the memorized TAGS.

6.1 MEMORIZING MASTER TAGS

1

Activate the escutcheon
(wait 8 seconds)

2

Press 1 then holding down 1 press E

3

4

Present master TAG (1)

5

Press 1

6

Press E (LED flash alternately)

7

Press 1

8

Present TAG (2) within 10 sec.

Memorization MASTER TAG

TAG already memorized as MASTER

TAG already memorized as SERVICE

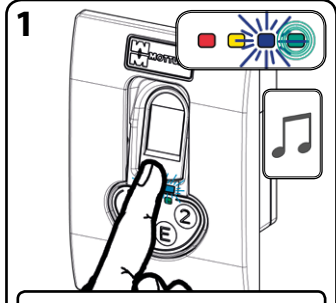
The system returns to point 6. To exit, press "E" or wait 20 sec. (timeout).

(1) If the lock is new or reset, any free Mottura TAG can be used to enter programming mode!

(2) Becomes MASTER TAG.

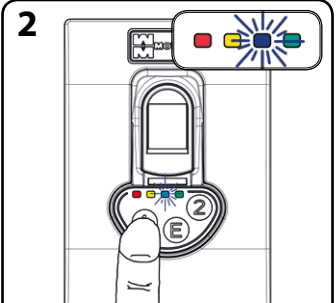
6.2 MEMORIZING SERVICE TAGS

ATTENTION: if you try to memorize a service TAG before you have memorized at least one master TAG, the TAG will automatically be memorized as a master.



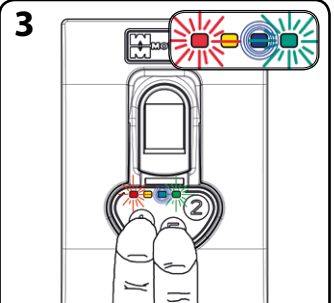
1

Activate the escutcheon
(wait 8 seconds)



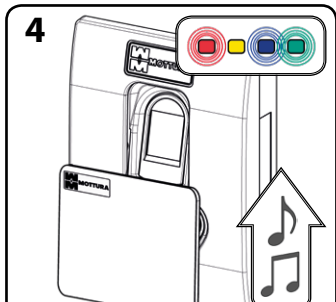
2

Press 1 then holding down 1 press E



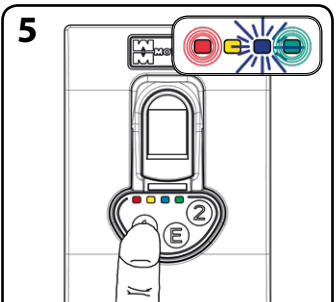
3

Press 1 then holding down 1 press E



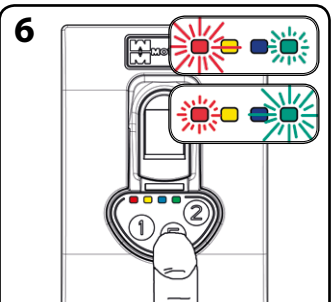
4

Present master TAG



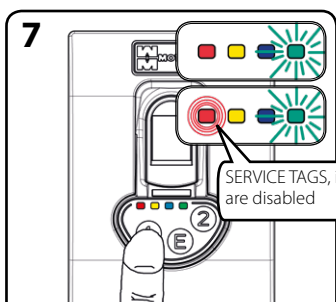
5

Press 1



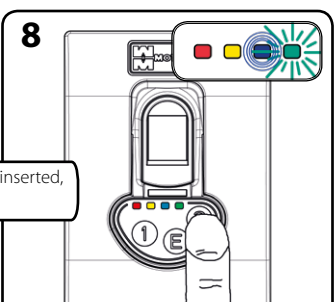
6

Press E (LED flash alternately)



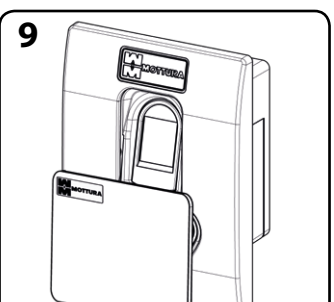
7

Press 1



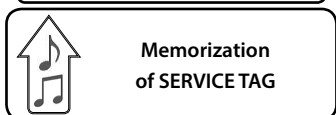
8

Press 2




9


Present TAG within 10 sec



Memorization of SERVICE TAG



TAG already memorized as MASTER




TAG already memorized as SERVICE

The system returns to point 6. To exit, press "E" or wait 20 sec. (timeout).

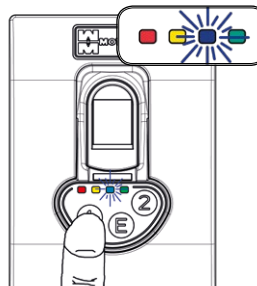
6.3 DISABLING SERVICE TAGS

1



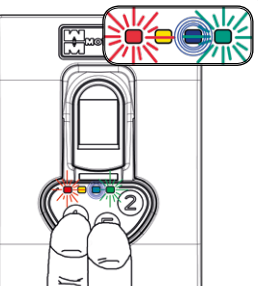
Activate the escutcheon
(wait 8 seconds)

2

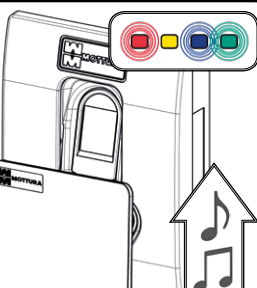


Press 1 then holding down 1 press E

3

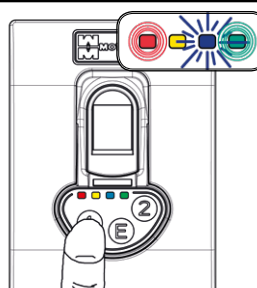


4



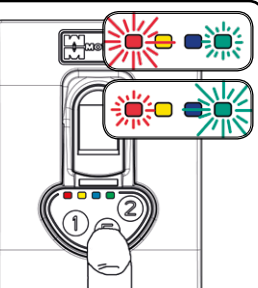
Present master TAG

5



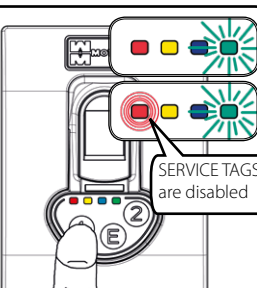
Press 1

6



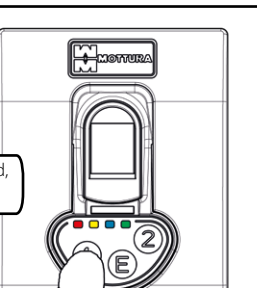
Press E (LED flash alternately)

7

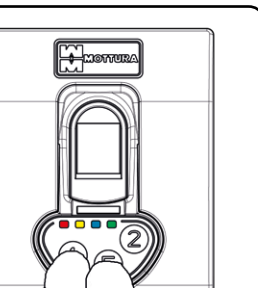


Press 1


8



9



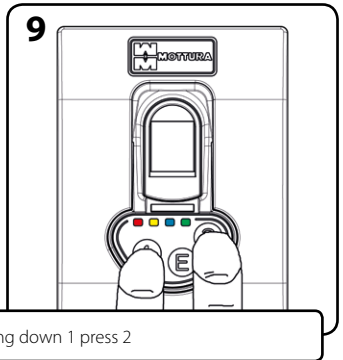
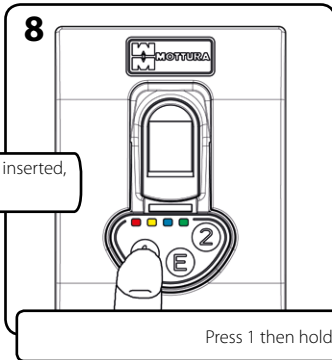
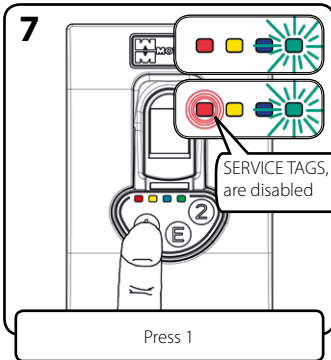
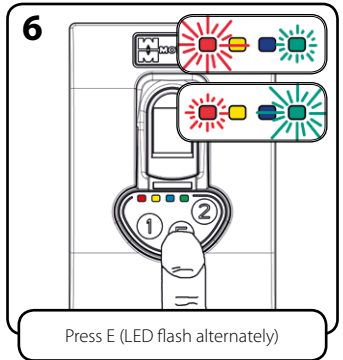
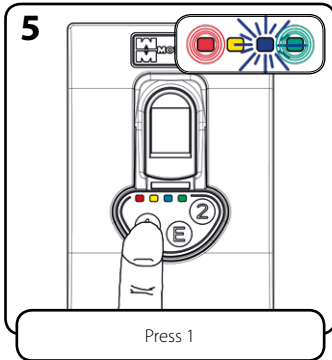
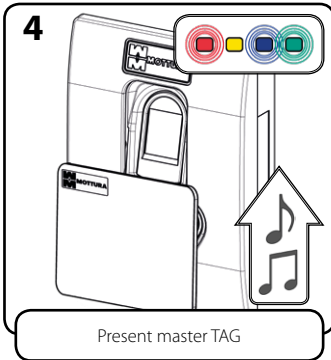
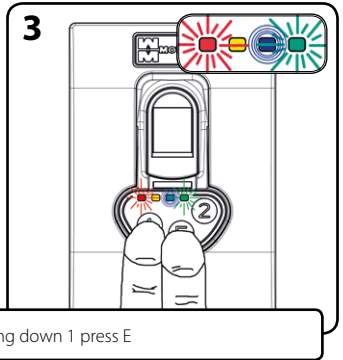
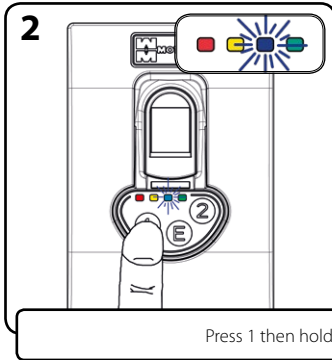
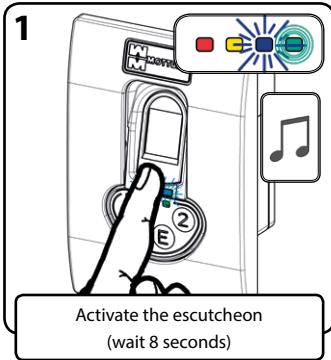
Press 1 then holding down 1 press E



**SERVICE TAGS
DISABLED**

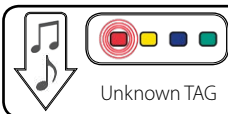
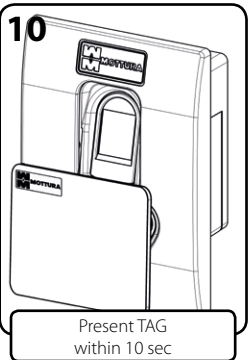
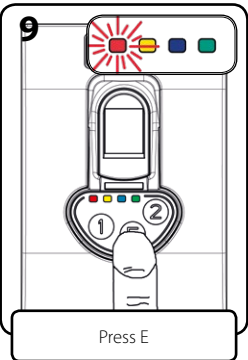
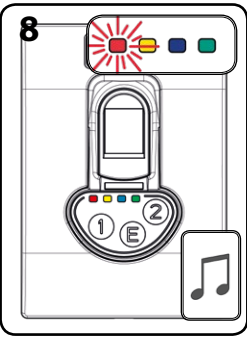
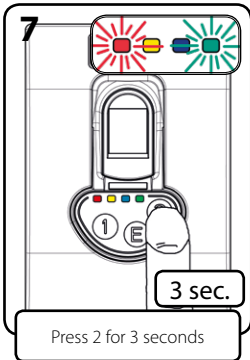
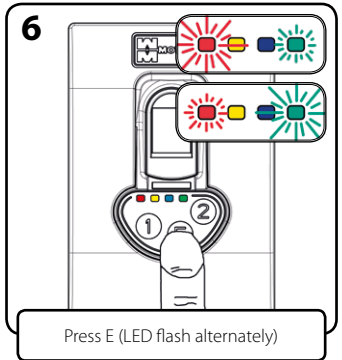
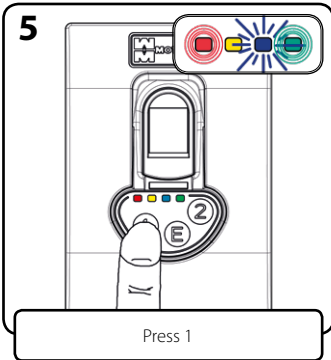
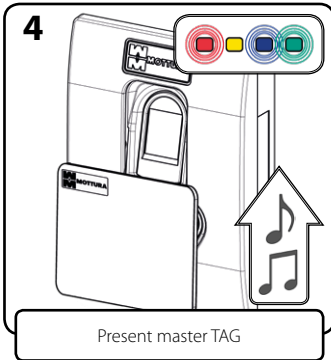
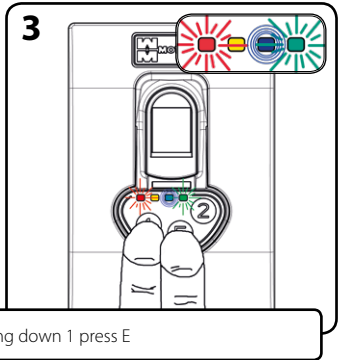
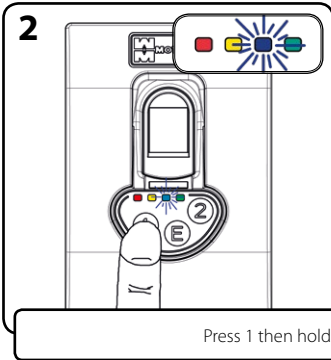
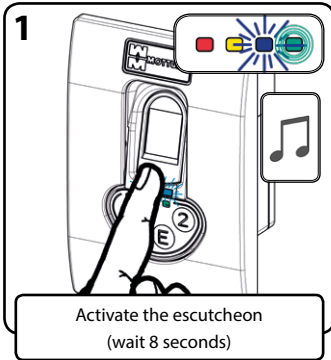
The system returns to point 6. To exit, press "E" or wait 20 sec. (timeout).

6.4 ENABLING SERVICE TAGS



The system returns to point 6. To exit, press "E" or wait 20 sec. (timeout).

6.5 DELETING SINGLE TAGS



ATTENTION: You CANNOT delete the master TAG used to enter programming mode.

The system returns to point 6. To exit, press "E" or wait 20 sec. (timeout).

6.6 DELETING ALL TAGS

1

Activate the escutcheon
(wait 8 seconds)

2

Press 1 then holding down 1 press E

3

4

Present master TAG

5

Press 1

6

Press E (LED flash alternately)

7

3 sec.

Press 2 for 3 seconds

8

9

Press 1 then holding down 1 press E

10

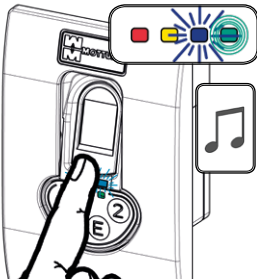
TAGS being deleted

The system returns to point 6. To exit, press "E" or wait 20 sec. (timeout).

7. MEMORIZING FINGERPRINTS (XMODE / ELECTRONIC / ELECTRICAL / XNOVA LOCKS)

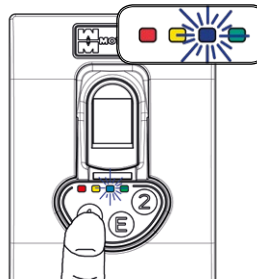
ENTER PROGRAMMING MODE: KEEP THE DOOR OPEN AND USE ONLY THE EXTERNAL ESCUTCHEON

1



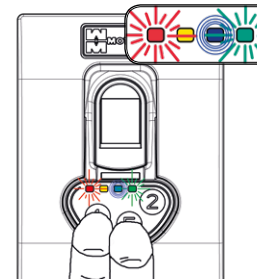
Activate the escutcheon
(wait 8 seconds)

2

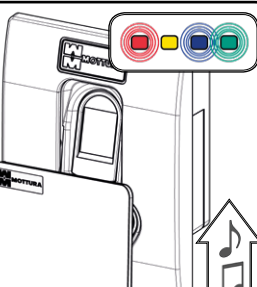


Press 1 then holding down 1 press E

3

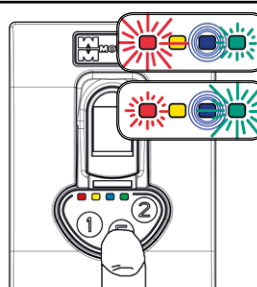


4



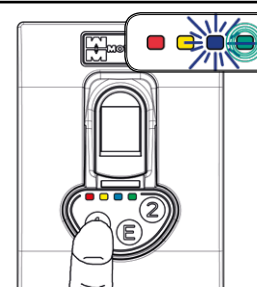
Present master TAG

5



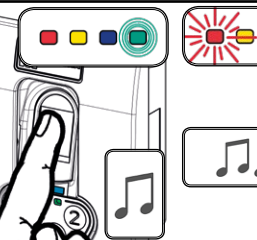
Press E (LED flash alternately)

6



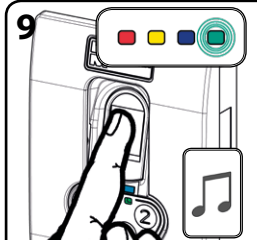
Press 1

8



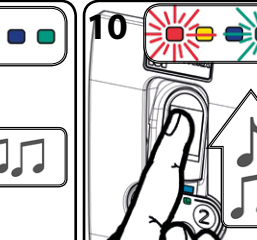
Place your finger first time

9




Place your finger second time

10



Place your finger third time

NO



Maximum limit of finger-
prints inserted (100)

It is recommended to
verify the correct insertion
of the fingerprint

The system returns to point 5. To memorize another fingerprint (maximum 100) repeat the operations from point 6.
To exit, press "E" or wait 20 sec. (timeout).

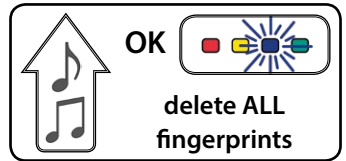
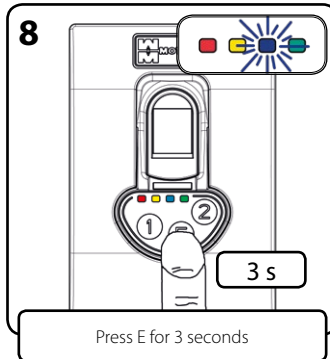
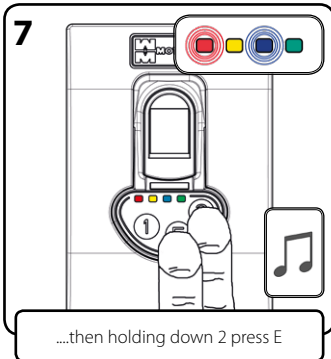
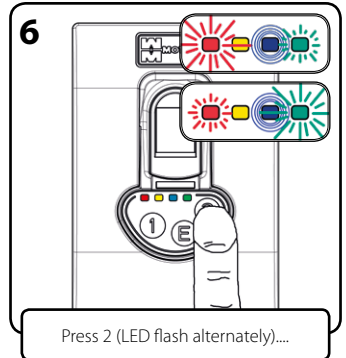
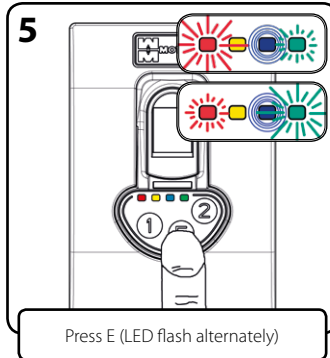
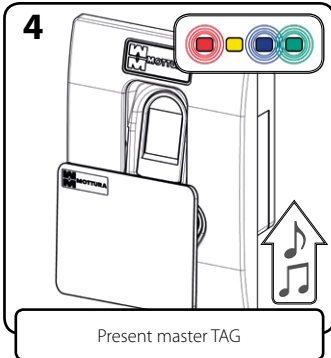
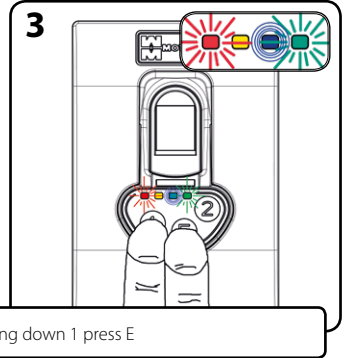
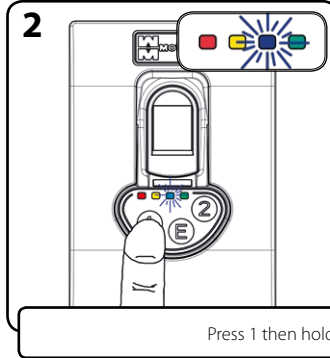
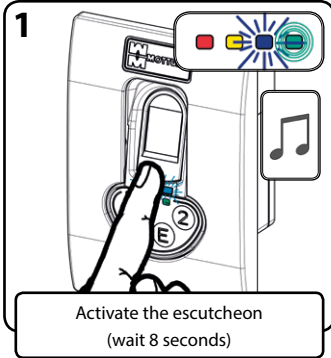
14

MOTTURA

99334GB - FINGERPRINT READER - REV. 04

8. DELETING FINGERPRINTS (XMODE / ELECTRONIC / ELECTRICAL / XNOVA LOCKS)

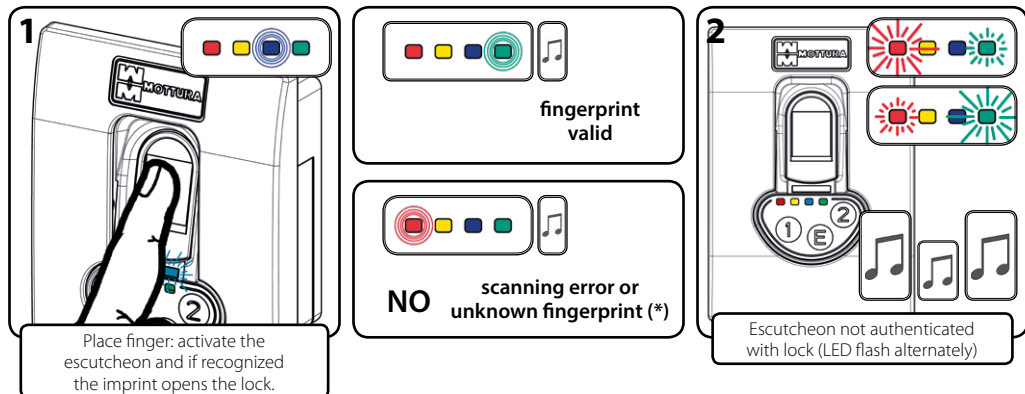
ENTER PROGRAMMING MODE: KEEP THE DOOR OPEN AND USE ONLY THE EXTERNAL ESCUTCHEON.



The system returns to point 5. To exit, press "E" or wait 20 sec. (timeout).

9. USING THE FINGERPRINT (XMODE / ELECTRONIC / ELECTRICAL / XNOVA LOCKS)

After you have stored the fingerprints, you can use them to operate the lock.



* In case of failed scan, see page 2
(USING THE FINGERPRINT READER)