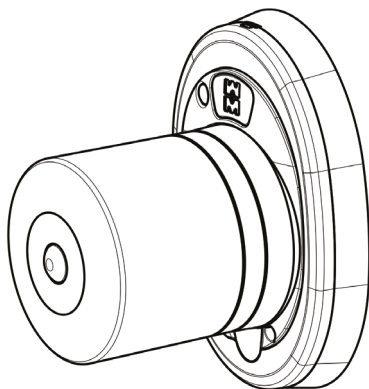


MOTORIZED KNOB BMP01... USER MANUAL



GENERAL INSTRUCTIONS

This manual is intended for technically qualified and trained installers.

Mottura Serrature di Sicurezza S.p.A. thanks you for choosing this product and reminds you:

- To read these instructions very carefully before installing this product and before doing any maintenance.
- That all assembly and connection procedures must follow good practice procedures and comply with current laws and standards.
- To NOT install this product in explosive rooms or atmospheres or in the presence of inflammable fumes/gases.
- DO NOT install this product on a door with risk of contact with water or atmospheric agents unless the door is adequately protected.
- To switch off the power supply and disconnect all live parts before doing any installation or maintenance work on the product. To take all possible precautions to eliminate the risk of electrical shock when performing installation or maintenance procedures described in this manual.
- That the installer must deliver these instructions and all of the maintenance instructions to the user.
- To keep these instructions for future reference and attach the sales receipt to validate the warranty.
- To contact authorized dealers only in case of problems.

Mottura Serrature di Sicurezza S.p.A. may change the characteristics of the products described in these instructions at any time and without notice.

WARRANTY TERMS

This product has been inspected by Mottura Serrature di Sicurezza S.p.A. and is guaranteed to be free of all manufacturing defects for the time specified by current Italian law, starting on the date of purchase indicated on the sales receipt. The warranty is in force if the sales receipt, showing details identifying the product, is exhibited to customer service personnel. The warranty covers the replacement or repair of parts found defective at origin due to manufacturing defects. Costs of shipping to and from service centres will be paid by the customer. In case of repeated malfunctions of the same type or unrepairable defects, Mottura Serrature di Sicurezza S.p.A. may, at its own discretion, replace the entire product.

The warranty on the replaced product will continue until expiration of the original warranty. If service work must be performed at the customer's premises, the customer shall – if requested – pay the authorised technical personnel travel expenses.

Risks related to product transportation shall be covered by the customer when shipped directly by the customer, and by the authorised technician when the product is picked up and shipped by the technician

LIMITS OF LIABILITY

The warranty does not cover damage deriving from:

- Negligence, carelessness or use in any manner not described in these instructions
- Failure to protect the device before doing any procedure that may generate scrap or waste (welding, drilling of panels, drilling of structure, etc.) that prevents its correct functioning
- Maintenance performed in any manner not described in these instructions or by unauthorised personnel
- Transport without the necessary precautions and from any circumstances that cannot be attributed to manufacturing defects.

In addition, Mottura Serrature di Sicurezza S.p.A. declines all liability for any damage to persons or property deriving from failure to observe all of the precautions described herein.



safeguarding your security

MADE
IN
ITALY

KEY / KNOB PROVISION

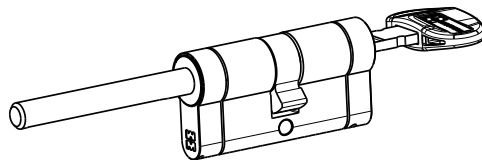
Installable with bMOTO basic kit

+

Spacers if needed

ART. 94.431

4pcs already
included in the
package



KEY / KEY

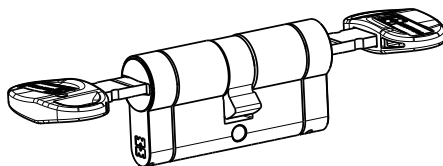
Installable with bMOTO basic kit

+

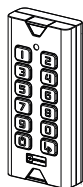
Spacers plates if needed

ART. 94.431

4pcs already
included in the
package

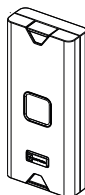


COMPATIBLE ACCESSORIES (Not included)



bDIGIT

Keypad
BLE



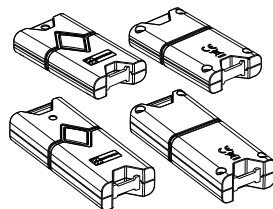
bTRACK

Fingerprint reader
BLE



bTAG

transponder
reader BLE



bKEY

Remote control
BLE



WARNINGS

The device contains rechargeable lithium-ion batteries (Li-ion).

The device contains a short-range radio frequency transmitter in the 2402÷2480 MHz frequency band and uses Bluetooth Low Energy (BLE) technology. Transmit power: 0dBm. Restrictions on use: None. The permitted European band is included in the ERC/REC 70-03 document as band b) of Annex 3: WIDEBAND DATA TRANSMISSION SYSTEMS. There are no restrictions for use in EU+EFTA countries for this band. Product compliant with the RED Directive 2014/53/EU.



DoC completa: <https://www.mottura.it/it/download/certificazioni/doc>

It is recommended to carry out the installation without the batteries on board and without the mains power cable connected, since if during the installation the lock were activated, even involuntarily, by rotating it could cause serious injury to the operator!



POWER WARNINGS

bMOTO is powered by rechargeable batteries already included. The knob batteries absolutely **CAN NOT BE** tampered with in any way. In the event of malfunction or need, they can be replaced **EXCLUSIVELY** with those indicated in the manual (see page 10).

N.B. Correct operation of the motorised knob cannot be guaranteed if a cable and/or power supply other than those supplied are used.

ASSEMBLY WARNINGS

bMOTO is to be mounted only on the internal side of the door.

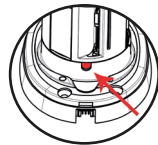
bMOTO CANNOT be installed on locks without a latch.

bMOTO CANNOT be installed on locks with fast quick release or automatic locking.

bMOTO CANNOT be installed on rim locks that do not have fixing holes for the Defender with 38mm centre distance.

bMOTO must be perpendicular (90°) to the lock/door panel, and in line with the cylinder.

bMOTO to be optimally installed on a Mottura rim lock, it will be necessary to remove the connector installed inside it at the entrance of the knob provision. To remove the connector, it will be necessary to unscrew the 3 grains (via the appropriate access) that block it. To identify the position of the grains, it will be necessary to use the cover for the rotation of the shaft.



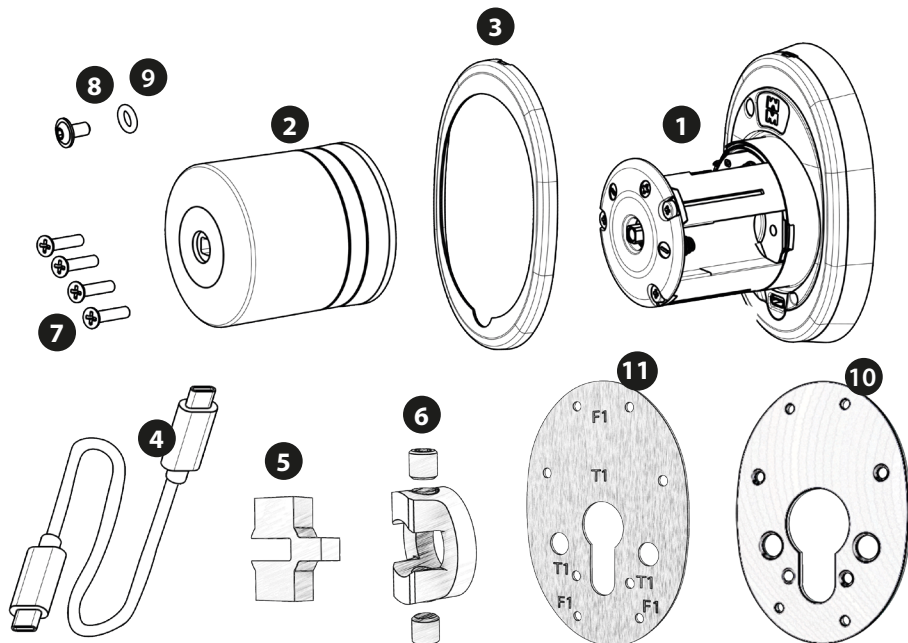
Pursuant to article 26 of Italian Legislative Decree no. 49 of 14 March 2014 "Implementation of EU Directive 2012/19 concerning waste electrical and electronic equipment (WEEE)" and article 9 of Italian Legislative Decree no. 188 of 20 November 2008 "Implementation of EC Directive 2006/66 on batteries and accumulators and waste batteries and accumulators" adequate waste sorting for subsequent sending of disposed equipment to recycling, treatment and environmentally compatible disposal contributes to avoiding possible negative effects on the environment and human health and promotes reuse and/or recycling of the materials composing the equipment.

Unlawful disposal of the product by the user may result in the application of penalties pursuant to current laws and regulations on the matter. We remind that batteries and power adapters, if present, must be removed before the device is disposed. Batteries and adapters must be collected and separately disposed.



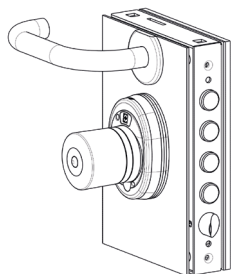
PACKAGE CONTENTS

- | | |
|---|---------------------------------------|
| 1 1x Knob body | 7 4x Knob trim fixing screws |
| 2 1x Knob cover | 8 1x Knob cover fixing screw |
| 3 1x Escutcheon cover | 9 1x Black Rubber Screw Washer |
| 4 1x Magnetic USB-C Charging Cable | 10 4x Spacers |
| 5 1x Adapter for thinner keys | 11 1x Fixing hole template |
| 6 1x Adapter for knob provision | |

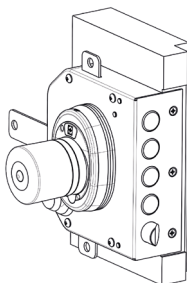


POSSIBILITY OF INSTALLING ON DIFFERENT DOOR TYPES

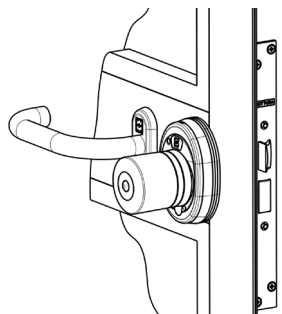
SECURITY DOORS

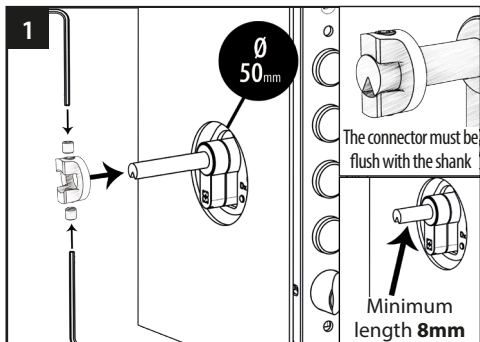


WOODEN DOORS

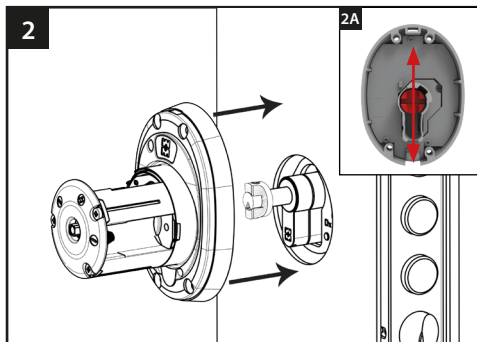


ALUMINIUM DOORS

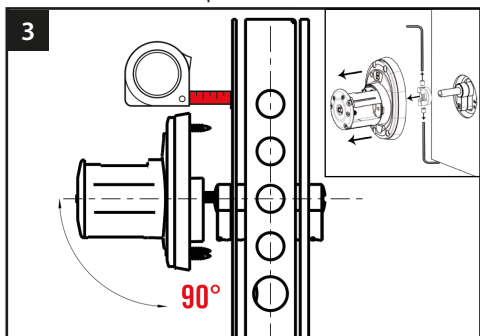




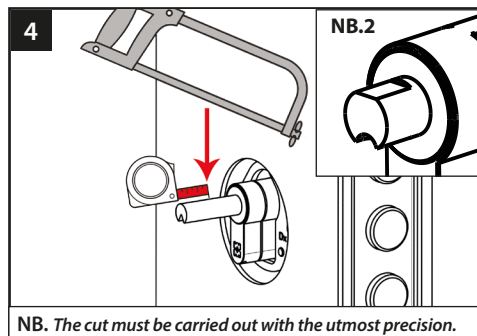
Insert the connector **6** onto the shank, making sure to have the groove facing downwards and secure the 2 grub screws. Rotate the connector so that the socket remains in the vertical position. **N.B.**



Fit bMOTO onto the connector, making sure the cut inside is in a vertical position (see image 2A).

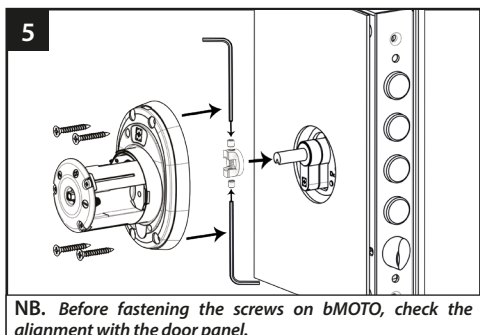


Measure the distance left between BMoto and the door panel. Then remove BMoto and the connector.



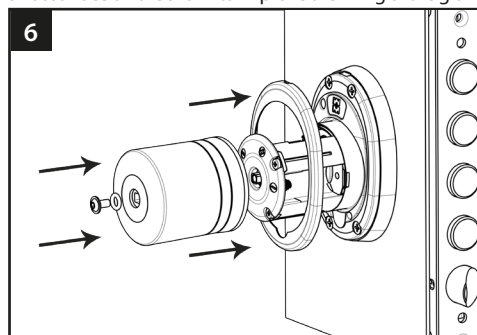
NB. The cut must be carried out with the utmost precision.

Transfer the measurement found previously to the cylinder shank and make the cut. **NB.2** Using a file, create a flat surface on the shank to improve the fixing of the grain.



NB. Before fastening the screws on bMOTO, check the alignment with the door panel.

After making the cut, repeat the operations in **Figure 1** and **Figure 2**. Then fix BMoto using the 4 holes on the plate (see pag.8). **N.B.**



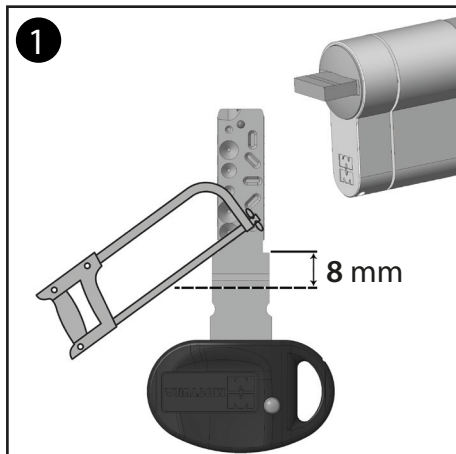
Power the knob by removing the plastic tab. Insert and secure the cover and escutcheon.

N.B. If the shank is shorter than 8mm it will not be possible to install the adapter.

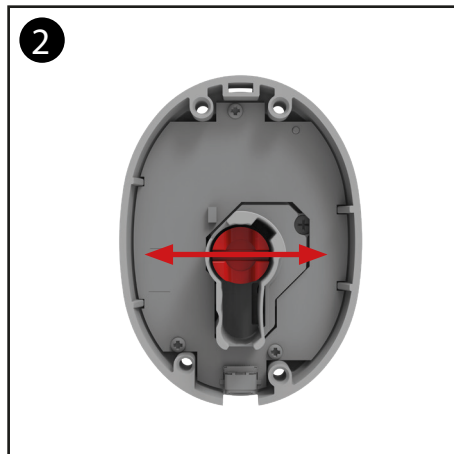
Fig.1 In the case of a shank without a groove, make a 4mm diameter hole into which to screw one of the connector 6 grub screws.

Fig.5 If there is a gap between the panel and the knob, compensate with spacer art.94431.

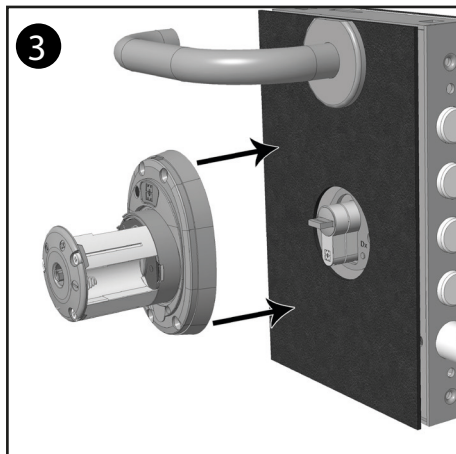
KEY/KEY CYLINDER ASSEMBLY INSTRUCTIONS



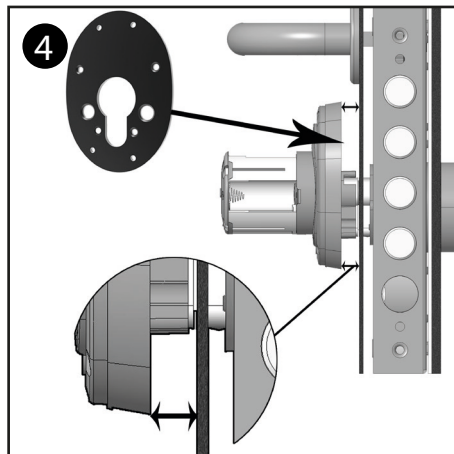
Cut the key 8mm from the stop.
Then insert it into the cylinder and rotate it until it is in a horizontal position.
N.B. Key thickness MAX 3mm



The appropriate connector will already be inserted inside the knob. Make sure that the key cut is positioned horizontally (to facilitate insertion with the key).



Fit bMOTO onto the cylinder, making sure that the key fits into the groove of the connection bushing.



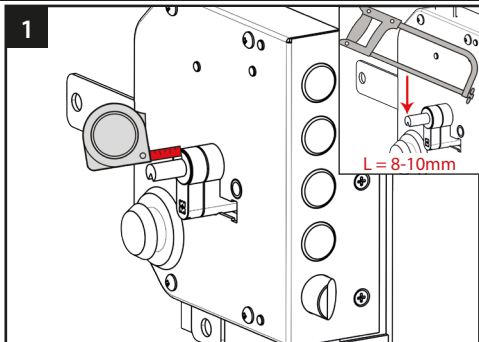
Compensate the space left between the panel and bMOTO with the shims 94.431. Once you have found the right number of spacers, fix everything using the 4 holes (see pag.8). *

N.B.

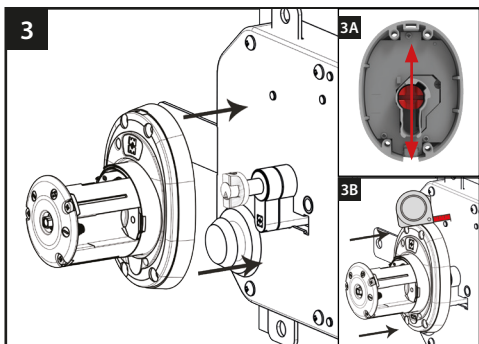
*In case you have a Mottura rim lock series 38.6... you will need to use the 94.427 thickness plate as the first one to fix the cylinder.

ASSEMBLY INSTRUCTIONS FOR RIM LOCK

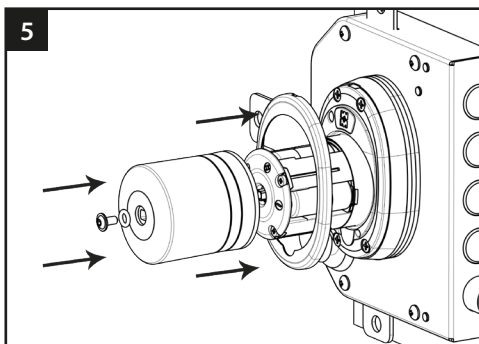
(SEE WARNINGS PAGE 3)



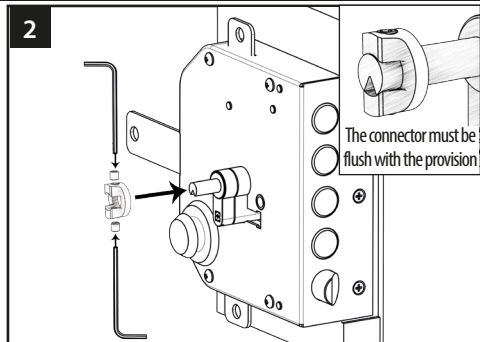
Measure the length of the shank. The shank should be between **8-10mm** long. If it is longer, you will need to cut it.



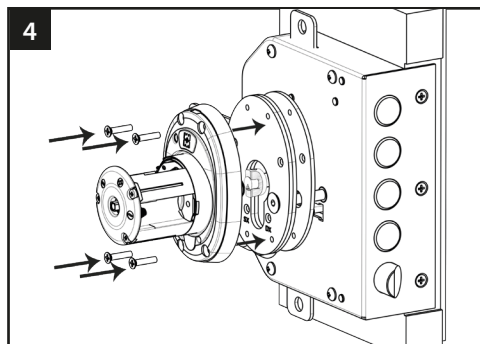
Fit bMOTO onto the connector, making sure that the cut inside is in a vertical position (**3A**). Check the distance between the lock and the knob (**3B**), and compensate with the plates (not included in the package).



Power the knob by removing the plastic tab. Insert and secure the cover and escutcheon.



Insert the connector **6** onto the knob provision, making sure to have the groove facing downwards and secure the 2 grub screws. Rotate the connector so that the socket remains in the vertical position. **N.B. pag.5**



Fix the necessary plates (**included 4pcs**) on the lock using the defender fixing screws. Fit bMOTO on the connector, making sure the groove is horizontal. Fix the escutcheon using the 4 threaded screws. (**SEE WARNINGS for using plates**).

WARNINGS for using plates

In case you have a Mottura lock you will need to use the (94.427D/S) plate as the first plate for fixing the cylinder + 2x 94.431. (not included)

94.427 D/S



In case you have a lock with front cylinder fixing, use the 3x 94.431 plates as spacers. (4pz included)

94.431



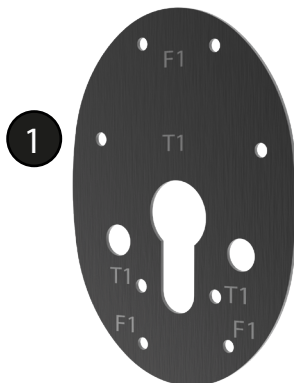
TEMPLATE FOR FIXING HOLES

N.B.

To be able to use the drilling template, it will be necessary to have the European profile cylinder protruding from the door panel #, otherwise it will not be possible to use the template.



Before fixing the knob to the panel, use the supplied template to make more precise pre-holes.

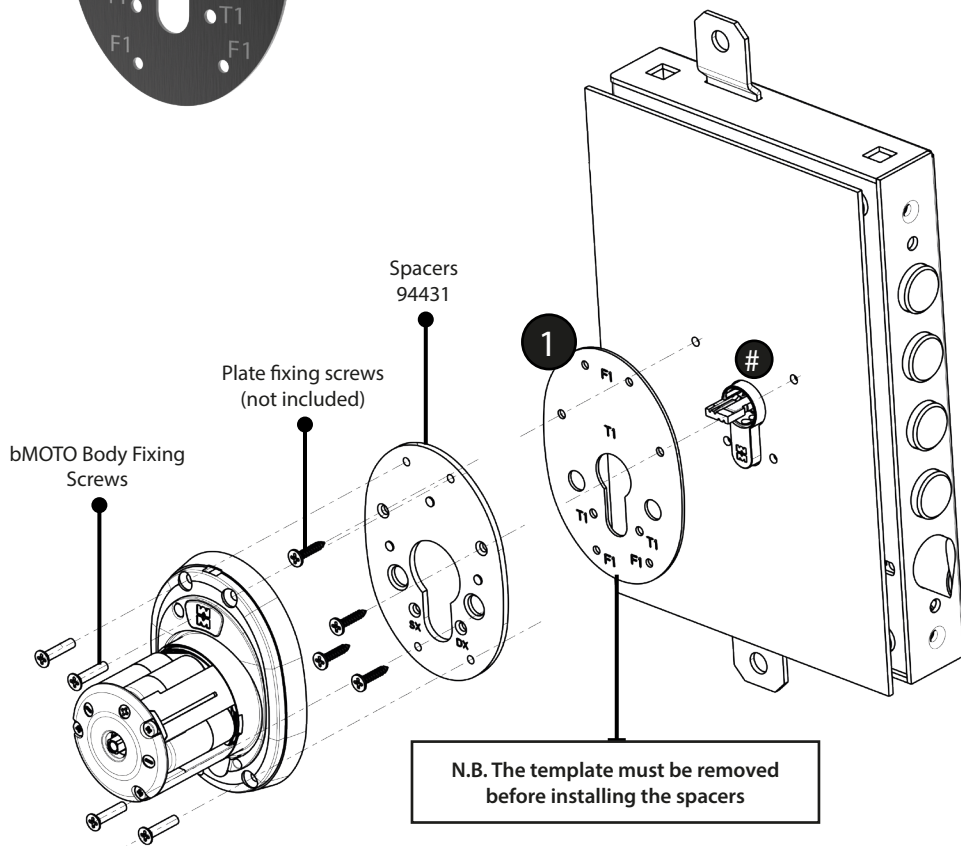


Position the template by fitting it onto the stator of the European profile cylinder, mark the relevant holes, remove the template and use a drill to make the pre-holes.

Holes F1 indicate the fixing holes of the bMOTO body.

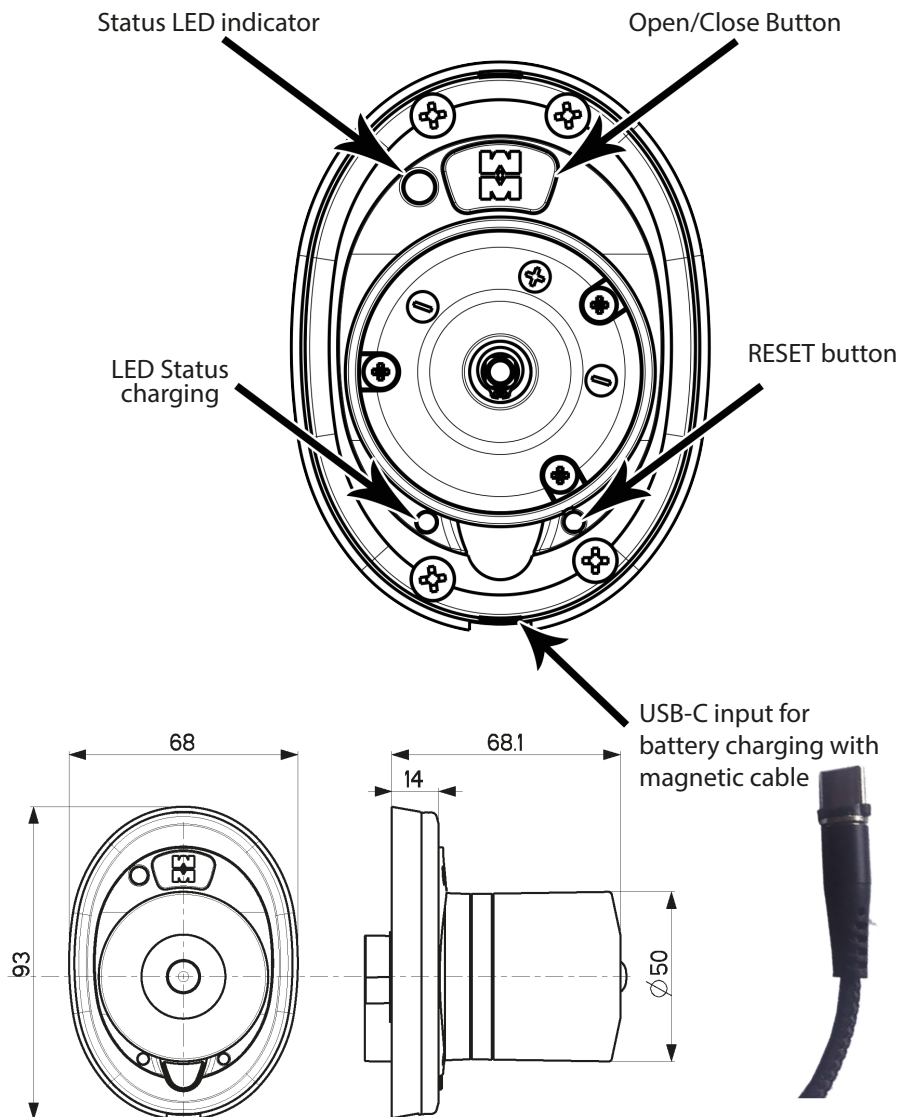
Holes T1 indicate the fixing holes for the 94431 thickness plates. (Ø 3mm holes F1 - T1)

ASSEMBLY SEQUENCE AND USE OF THE TEMPLATE FOR FIXING HOLES



KNOB DESCRIPTION

The bMOTO motorized knob is a mechatronic device designed to open/close a lock by rotating the European cylinder connected to it. The device is powered by rechargeable batteries. The device is equipped with Bluetooth Low Energy which makes it interfaceable with a series of other peripherals of the bTECHNOLOGY Mottura line and with smartphones, following a pairing procedure via the bMOTTURA app. The cylinder can always be operated using a mechanical key (outside) or a manual knob (inside). From the inside, a simple button allows it to be opened/closed, with the possibility of activating the assisted operation mode by rotating the knob on the inside.



POWER SUPPLY (SEE WARNINGS PAGE 3) ⚠

bMoto is powered by rechargeable batteries (already included).
To feed it, you will have to remove the tab indicated in yellow in the image.

Charging the batteries (Through USB-C input)

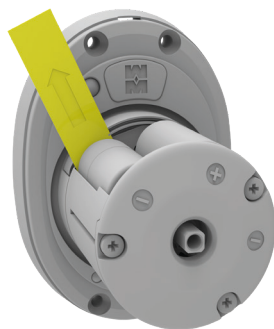
Connect the USB power supply (supplied in the package) to the motorized knob using the USB-C cable provided.

The time required to recharge the knob if the batteries are completely dead is approximately 2-3 hours. If the charging time is much longer than indicated, the batteries may be damaged.

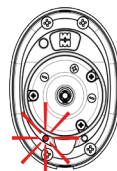
Once charging is complete, disconnect the power supply from the mains and unhook the magnetic cable. The USB-C connector can be left connected to the knob for subsequent use.

If it is necessary to replace the B-Moto batteries, it is **MANDATORY** to use 99.786 batteries supplied on request by Mottura Serrature di Sicurezza. The use of different batteries is dangerous for the user and may cause damage to the product. Mottura Serrature di Sicurezza will not be responsible for any damage caused by the use of batteries other than those indicated.

NB: The correct functioning of the motorised knob cannot be guaranteed if you use a cable and/or power supply other than those supplied.

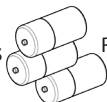


LED FLASHING
(Charging)



LED FIXED
(Full charge)

Rechargeable batteries



3x

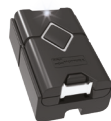
Rechargeable batteries
Cod. 99.786

KNOB OPERATION TYPES

INTERNAL OPERATION VIA BUTTON: A short press of the main button opens the door, a long press closes it (see button table).

BLUETOOTH OPERATION: All Mottura bTECHNOLOGY Bluetooth peripherals are directly compatible with the motorized knob. It is also possible to operate the device from a smartphone.

REMOTE BUTTON/INTERCOM OPERATION: Use the Bluetooth device code 99BKEY0003 by connecting a dry N.O. contact as indicated in the manual of the same



MANUAL OPERATION: In case of emergency, the knob can be turned manually from the inside or using the key from the outside. If the batteries are low, the device can only be operated in this way to avoid damaging the batteries.

The key operation must never be performed if the "assisted rotation both PARTIAL and COMPLETE" functions are used. If the knob is used in the PARTIAL or COMPLETE assisted mode, ALWAYS remove THE KEY FROM THE CYLINDER, as the rotation of the key could cause injury to the user.

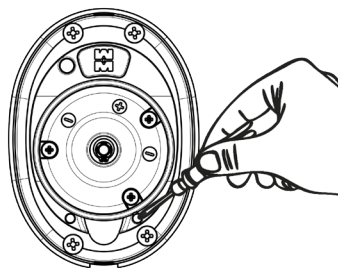


RESET BUTTON

The RESET button is a key that, if held down for a certain time, allows you to return the knob to the factory conditions, that is, eliminating all the associations made, including the learning of the lock throws. To perform the RESET, you will need to hold down the reset button for 5 seconds until the fixed white LED lights up. Alternatively, perform the reset from the bMOTTURA application.

Available Functions

TIME (sec)	COLOR LED STATUS	FUNCTION	LED COLOR (FINAL)
5	WHITE FLASHING	Factory reset	WHITE FIXED



Use a flat or round-tipped tool to reach the programming button.

FIRST PROGRAMMING VIA bMOTTURA APP

DEVICE MANAGEMENT VIA bMOTTURA APP



To program and manage this device, you will need to use the bMOTTURA APP. All programming and management of Mottura bTECHNOLOGY BLE products is controlled directly via the Mottura application, with guided procedures during the various steps of programming the new devices. **ACCESS CONTROL management is integrated within the App.**

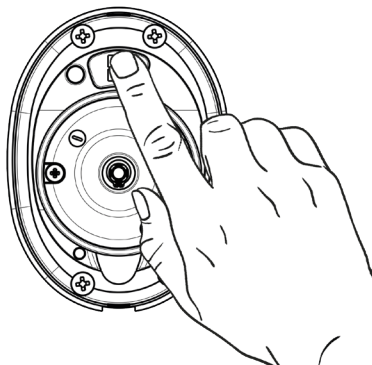


scan the qr code to download the app

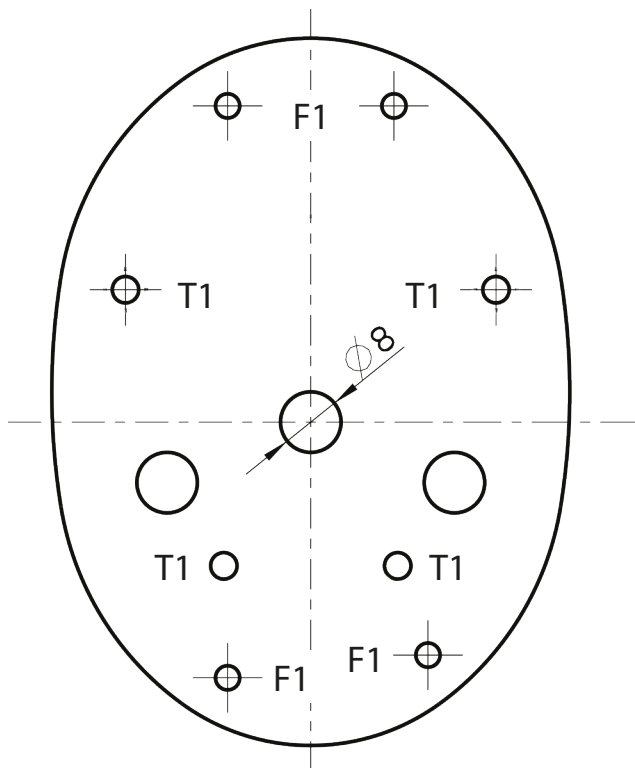
OPEN/CLOSE BUTTON

From the inside, you can open/close the lock by pressing the OPEN/CLOSE button as follows:

TIME (sec)	COLOR - SOUND	FUNCTION - PRESS KEY
0 ÷ 1	Green - one beep	OPEN (just one click)
1 ÷ 4	Red - two beeps	CLOSE (long press of the key)
> 4	None - decreasing sound	NO FUNCTION (release the button)



TEMPLATE FOR PLATE FIXING HOLES



SCALA 1:1

SERIAL CODE