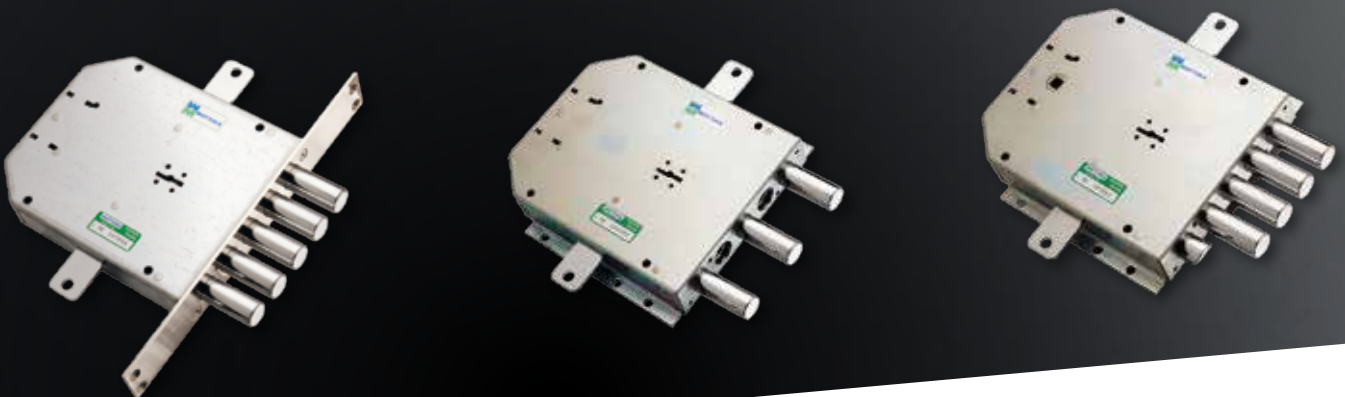


# 50

## DOUBLE-BITTED LOCKS WITH SIDE HANDLE SQUARE

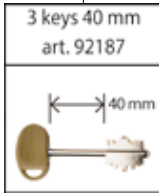
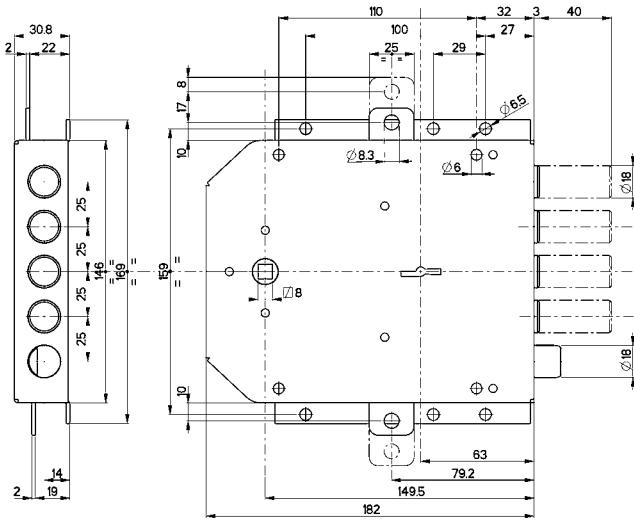
Easy  
GO

DOUBLE-BITTED  
LOCKS



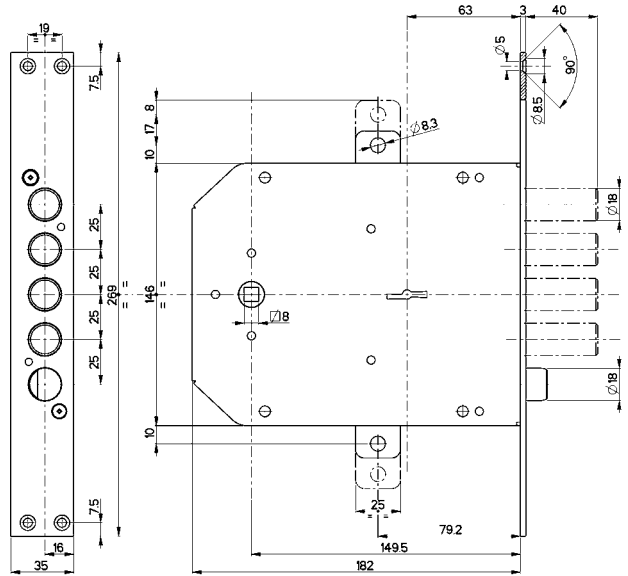
## 50.555

MADE IN ITALY



## 50.735 MORTISE-TYPE

MADE IN ITALY



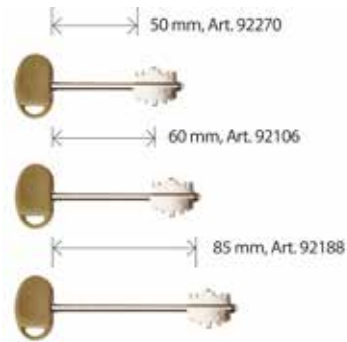
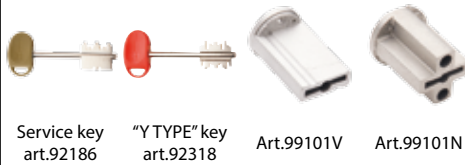
### Characteristics

- Three-points lock
- Backset 63 mm
- Bolts travel 40
- Bar travel 17 mm
- The articles are available in right or left version (please specify with order).

The lock is supplied with:

- 3 keys 40 mm stem art. 92187
- internal escutcheon art. 95314
- external escutcheon art. 95315

- On request** the locks can be supplied with:
- 50 mm stem keys art. 92270
  - 60 mm stem keys art. 92106
  - 85 mm stem keys art. 92188
  - internal and external key guide bushings art. 99101V or 99101N
  - service key art. 92186
  - "Y TYPE" key art. 92318



**ON REQUEST**  
Coded key for service use  
(opens latchbolt only)



**ON REQUEST**  
Double-bitted key "Y type"  
operates latchbolt and 2 turns.

### EASY-GO Replacement kit



RIM LOCK			MORTISE-TYPE
	<h2>50.555</h2>		
	<p style="text-align: center;">3 keys</p> <p><b>Three-points lock with latchbolt</b> Ø 18 activated by key and <math>\square</math>8 handle square. 4 round bolts Ø 18 with centre distance 25 mm Handle backset 150 mm</p> <p>Other accessories <b>NOT</b> included.</p>		
	<h2>50.556</h2>		
	<p style="text-align: center;">3 keys</p> <p><b>Three-points lock without latchbolt</b> 5 round bolts Ø 18 with centre distance 25 mm</p> <p>Other accessories <b>NOT</b> included.</p>		
	<h2>50.557</h2>		
	<p style="text-align: center;">3 keys</p> <p><b>Three-points lock with latchbolt</b> Ø 18 activated by key and <math>\square</math>8 handle square. 2 round bolts Ø 18 with centre distance 50 mm Handle backset 150 mm</p> <p>Other accessories <b>NOT</b> included.</p>		
	<h2>50.558</h2>		
	<p style="text-align: center;">3 keys</p> <p><b>Three-points lock without latchbolt</b> 3 round bolts Ø 18 with centre distance 50 mm</p> <p>Other accessories <b>NOT</b> included.</p>		

## FOR ACCESSORIES AND SPARE PARTS SERIES 50 REFER TO



SPARE LEVER  
SETS

# 91

# 92

KEYS



BARS

# 93

# 94

FACE PLATES  
STRIKER PLATES



ESCUTCHEONS

# 95

# 99

VARIOUS  
ACCESSORIES

