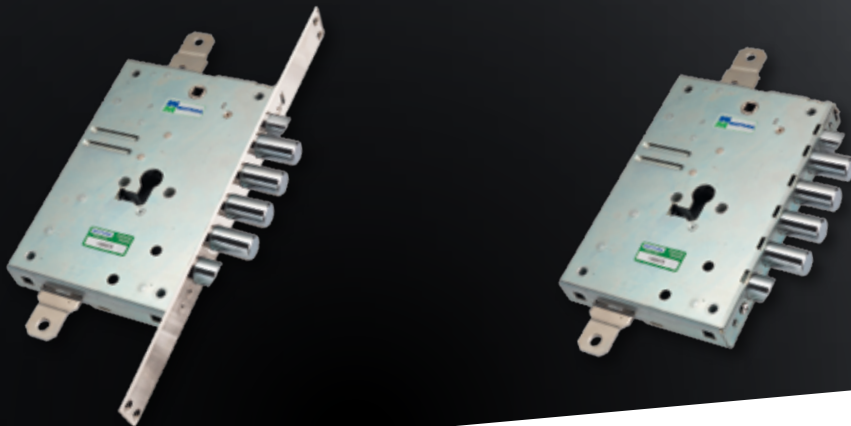


# 85 A

## AUTOMATIC LOCKING EUROPROFILE CYLINDER LOCKS



*Automatic*



EUROPROFILE  
CYLINDER LOCKS



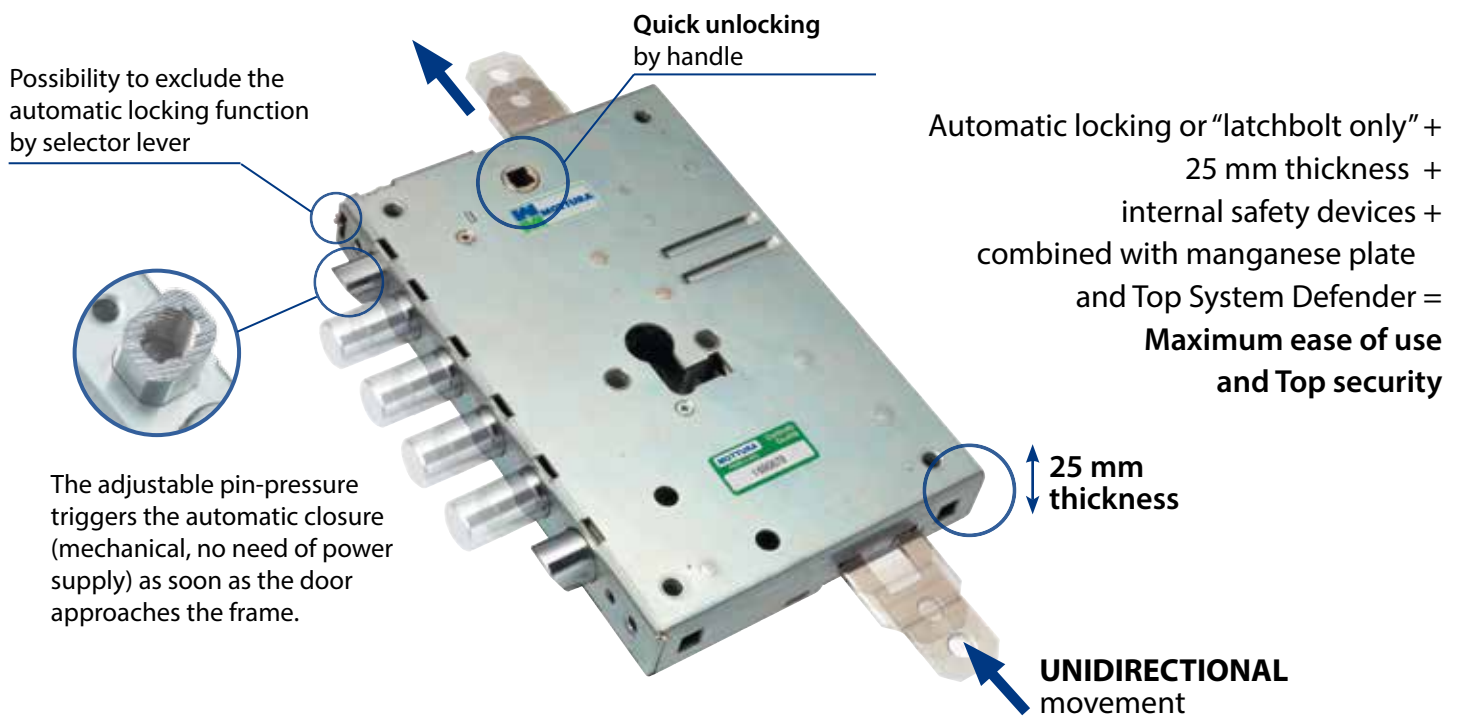
<p><b>SUPPLIED</b> Security locks with block lever on deadbolts</p>	<p><b>ON REQUEST</b> Cylinder extraction protection (T) + Q (B SUPPLIED + T)</p>
<p><b>ON REQUEST</b> Lock with forced cylinder extraction protection system</p>	<p><b>ON REQUEST</b> Security locks with block lever on deadbolts and certification</p>

Note : 85A series locks are supplied with B version as standard. Bolts resistance to forcing exceeds 600 Nw required by applicable standards. Locks can be supplied Q version (B + T) on request.

Note : the burglar-proof device Q (B + T) MUST always be mounted on the outside side of the door; otherwise, it will NOT work. It is always necessary to specify the opening hand.

Note : On request B or Q (B + T) locks version can be supplied with certification according to standard UNI EN 12209 and CE mark. In the order, please add U to the article code of the lock. Certification is valid only if the lock is protected by a manganese plate of the same dimensions of the lock or larger.

Use DEFENDER® (Order separately: see section 94)				WE RECOMMEND USING CHAMPIONS® SECURITY CYLINDERS
TOP SYSTEM	LEVEL	BASIC	DF...	
				 <small>NEW GENERATION HIGH SECURITY CYLINDERS</small>



The **reduced thickness of 25 mm** allows you to insert the protective manganese plate with Ø 50 TOP SYSTEM Defender, achieve the highest level of resistance to intrusion and burglary attempts. It also makes possible to include fireproof, sound-absorbing and heat-insulating panels.

The **selector lever** permits to choose between "Automatic mode" (the lock closes automatically as soon as the door approaches the frame) or "latchbolt only", operated by handle.

All versions are fully interchangeable with 85.371 and 85.571 articles, 30 mm thick, thanks to the provided spacers.

The bars movement is **UNIDIRECTIONAL**: both upward and closing.



## 85.A571

MADE IN ITALY

### Characteristics

Variation in centre distance: ..../28 - ..../37

- Three-points **WITH AUTOMATIC LOCKING**
- Cylinder and handle backset 63 mm
- Round bolts Ø 18 mm with 28 mm travel
- Bar travel 16 mm with **UNIDIRECTIONAL** movement (upward)

- Block lever on bolts **B**

### On request

the locks can be supplied with:

- burglar-proof device

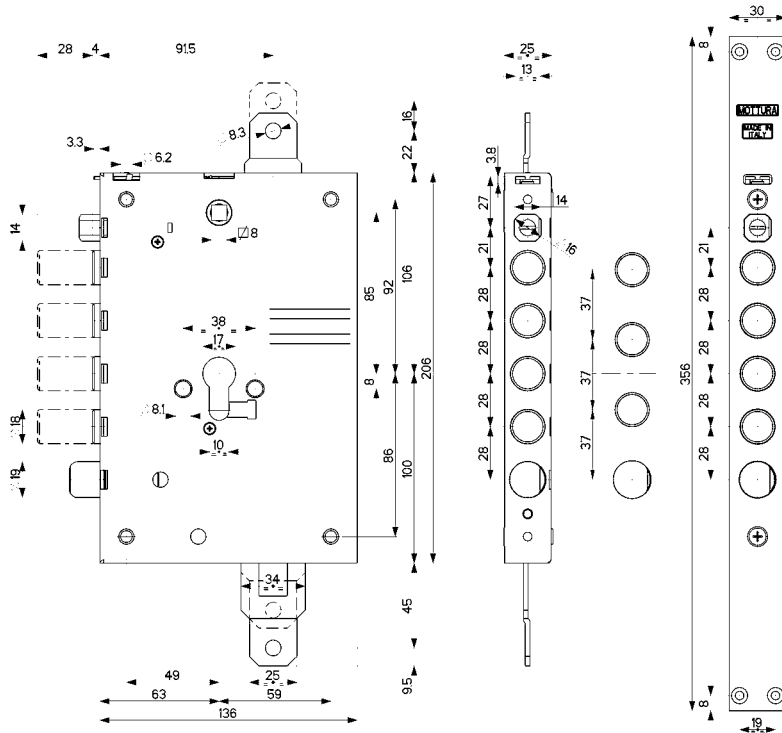
(cylinder extraction) **T**  
Add **Q** to the code.

- **U** certification

Pair with Defender®  
TOP SYSTEM, LEVEL, BASIC, DF.  
(Order separately; see section 94)

**NOTE:** Used cylinder fastening plate  
99067DM8 with left lock  
99067SM8 with right lock

It is RECOMMENDED to use  
CHAMPIONS® security cylinders



RIM LOCK

MORTISE-TYPE

## 85.A571...B 85.A771...B

..B Block lever on bolts

..Q Reinforcement on the bolts + Burglar-proof (B+T)

### Three-points with latchbolt for cylinder - AUTOMATIC LOCKING

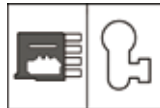
Latchbolt Ø 19 mm operated by cylinder and  $\square$ 8 handle square.

Lever with adjustable projection

### Reversible latchbolt and lever

The article is supplied left or right-hand (specify in the order)

Cylinders, reinforcements and other accessories are **NOT** included



Use **SWITCHLOCKS** (Order separately: see section 96)

96.301 - 96.3011

96.301/28/37 - 96.3011/28/37

96.302/50/53 - 96.3021/50/53



Use **BARS**

93242Z025

(Order separately:  
see section 93)



Note: the use of different switchlocks from those reported, does not guarantee the proper functioning of the lock.

### FOR ACCESSORIES AND SPARE PARTS SERIES 85A REFER TO

93

BARS



94

DEFENDER



96

SWITCHLOCKS



94

FACE PLATES  
STRIKER PLATES



95

ESCUTCHEONS



99

VARIOUS  
ACCESSORIES

